

## Report according to EN 50160 2011

### Customer

Name:	Statia 110/20kV Gai
Company:	SC Enel Distributie Banat SA
Location:	Arad jud.Arad

### Auditor

Name:	
Company:	SC Enel Distributie Banat SA

Start date:	1/1/15 12:00 AM
End date:	12/31/15 11:59 PM
Date:	3/23/16 4:20 PM
Software:	Janitza-GridVis 4.0.2(2013-05-28_14-34-52)



### UMG511

Device type:	UMG511
EN 61000-4-7 Class:	Class 1
EN 61000-4-30 Class:	Class A
Flicker:	Supported
Events:	Supported
Transients:	Supported

Input Voltage (MediumVoltage):	20000.0V
Frequency:	50.0Hz
Relevant Voltages:	LL
Line selection:	L1
	L2
	L3

## Summary

Frequency +/-1%	Passed
Frequency -6%/+4%	Failed
Voltage effective L2-L1 - 1st Test	Passed
Voltage effective L2-L1 - 2nd Test	Failed
Voltage effective L3-L2 - 1st Test	Passed
Voltage effective L3-L2 - 2nd Test	Failed
Voltage effective L1-L3 - 1st Test	Passed
Voltage effective L1-L3 - 2nd Test	Failed
THD U L2-L1	Passed
THD U L3-L2	Passed
THD U L1-L3	Passed
Unbalance Voltage	Passed
Long term flicker L2	Passed
Long term flicker L3	Passed
Long term flicker L1	Passed
Harmonics voltage (rel.) L2	Passed
Harmonics voltage (rel.) L3	Passed
Harmonics voltage (rel.) L1	Passed
Undervoltage	
Overvoltage	

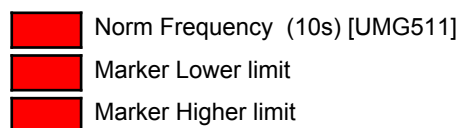
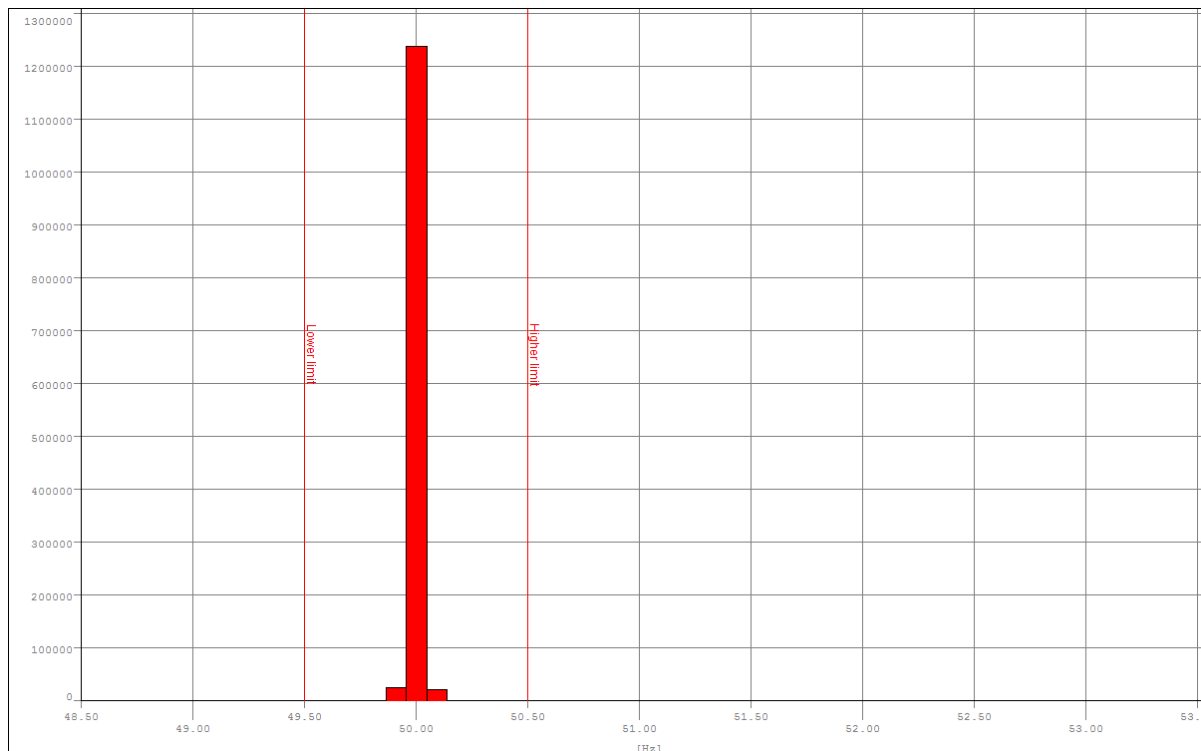
## Frequency $\pm 1\%$

### Limits

Lower limit	49.50Hz
Higher limit	50.50Hz
Percentage	99.50%

### Results

Min value	48.78Hz
Average value	50.00Hz
Max value	53.23Hz
Undercut	0.06%
Overcut	0.00%
Total out	0.07%
Result	Passed
Recording vacancy	59.32%



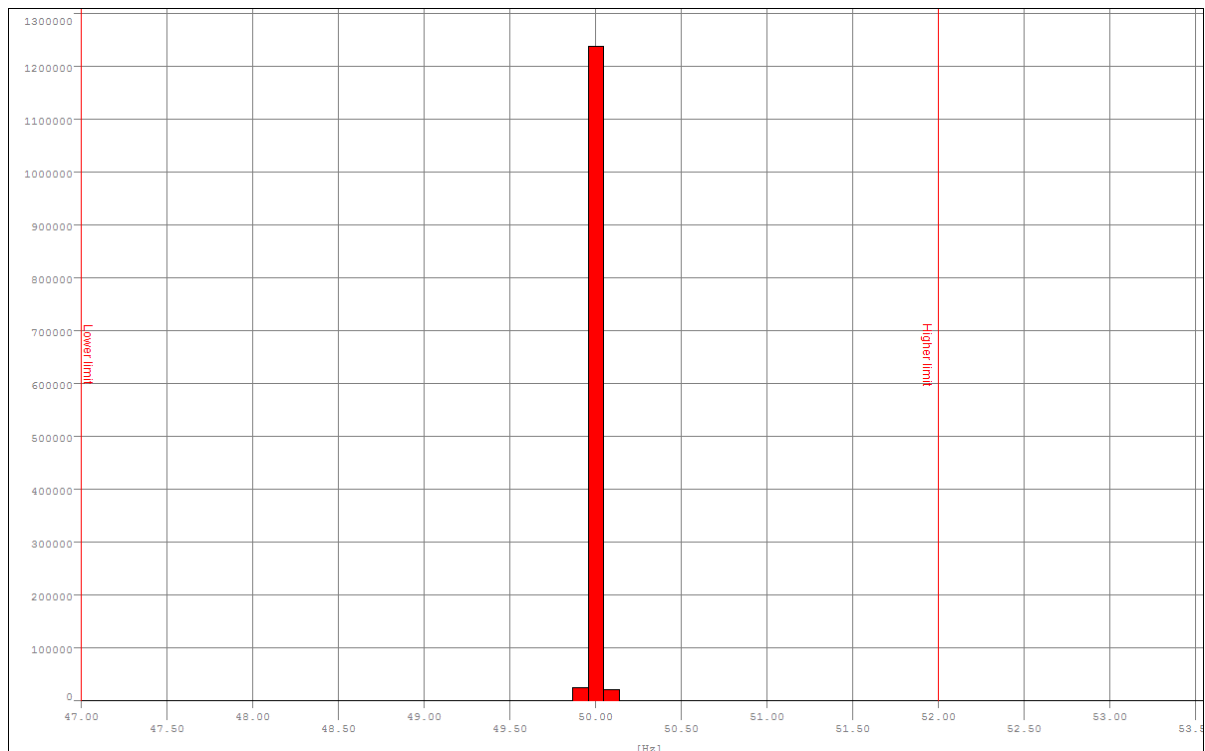
## Frequency -6%/+4%

### Limits

Lower limit	47.00Hz
Higher limit	52.00Hz
Percentage	100.00%

### Results

Min value	48.78Hz
Average value	50.00Hz
Max value	53.23Hz
Undercut	0.00%
Overcut	0.00%
Total out	0.00%
Result	Failed
Recording vacancy	59.32%



- Norm Frequency (10s) [UMG511]
- Marker Lower limit
- Marker Higher limit

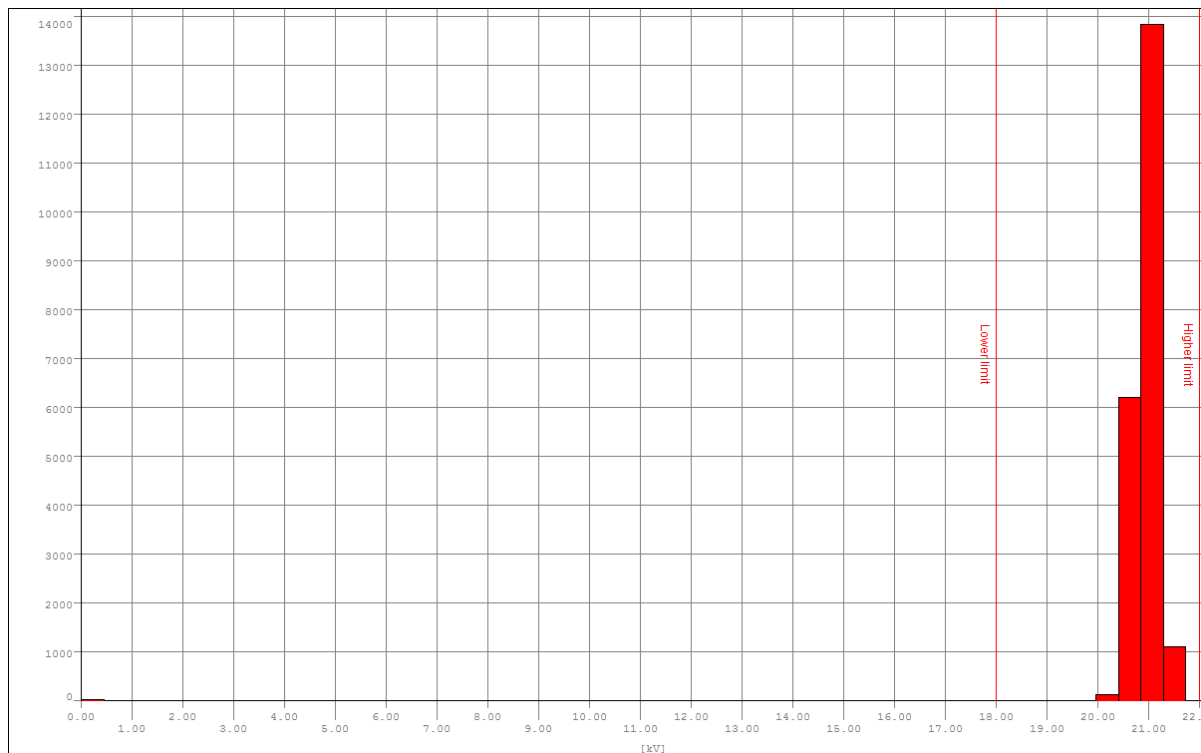
## Voltage effective L2-L1 - 1st Test

### Limits

Lower limit	18000.00V
Higher limit	22000.00V
Percentage	99.00%

### Results

Min value	5.78V
Average value	20932.42V
Max value	21732.72V
Undercut	0.11%
Overcut	0.00%
Total out	0.11%
Result	Passed
Recording vacancy	59.51%



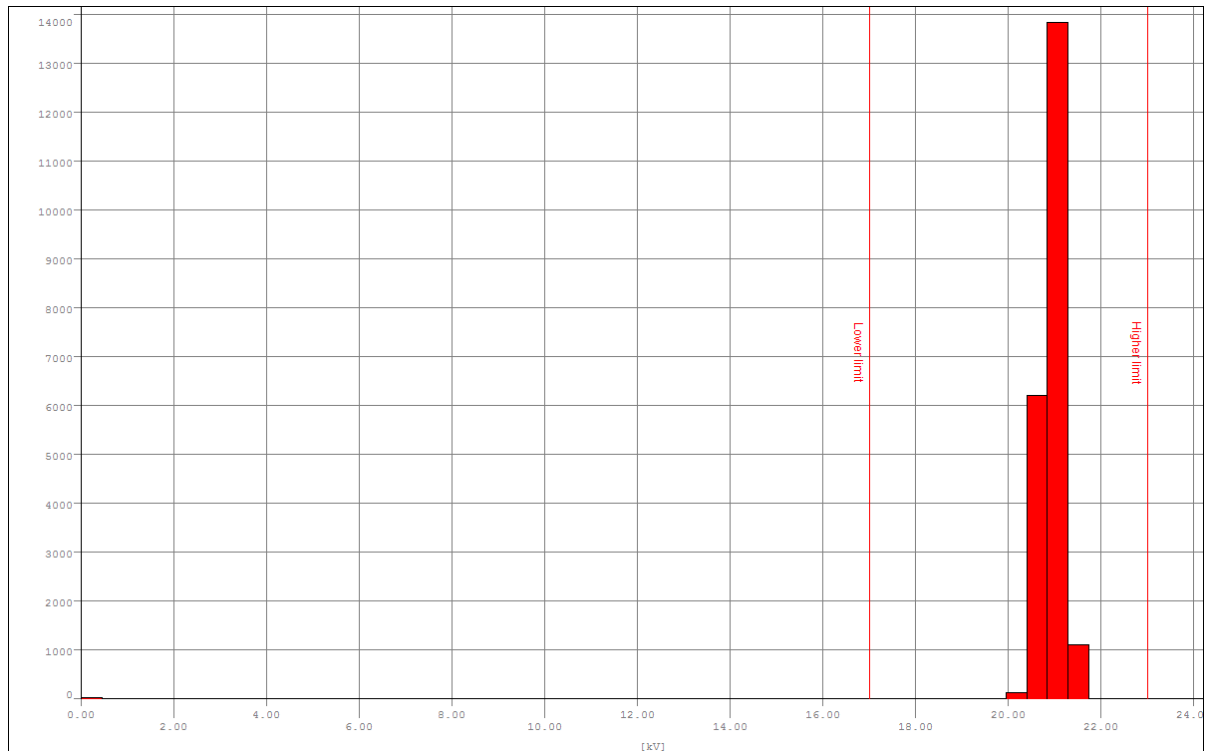
## Voltage effective L2-L1 - 2nd Test

### Limits

Lower limit	17000.00V
Higher limit	23000.00V
Percentage	100.00%

### Results

Min value	5.78V
Average value	20932.42V
Max value	21732.72V
Undercut	0.10%
Overcut	0.00%
Total out	0.10%
Result	Failed
Recording vacancy	59.51%



- Voltage effective L2-L1 (10m) [UMG511]
- Marker Lower limit
- Marker Higher limit

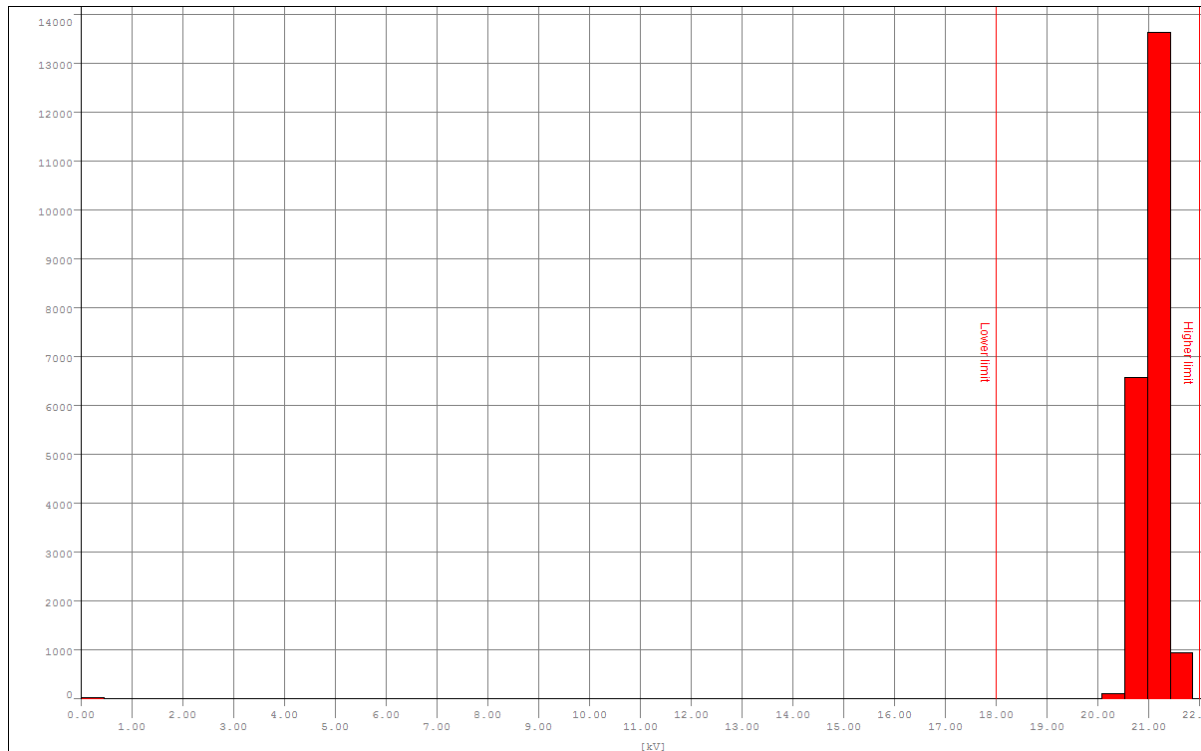
## Voltage effective L3-L2 - 1st Test

### Limits

Lower limit	18000.00V
Higher limit	22000.00V
Percentage	99.00%

### Results

Min value	7.00V
Average value	21051.91V
Max value	21868.80V
Undercut	0.11%
Overcut	0.00%
Total out	0.11%
Result	Passed
Recording vacancy	59.51%



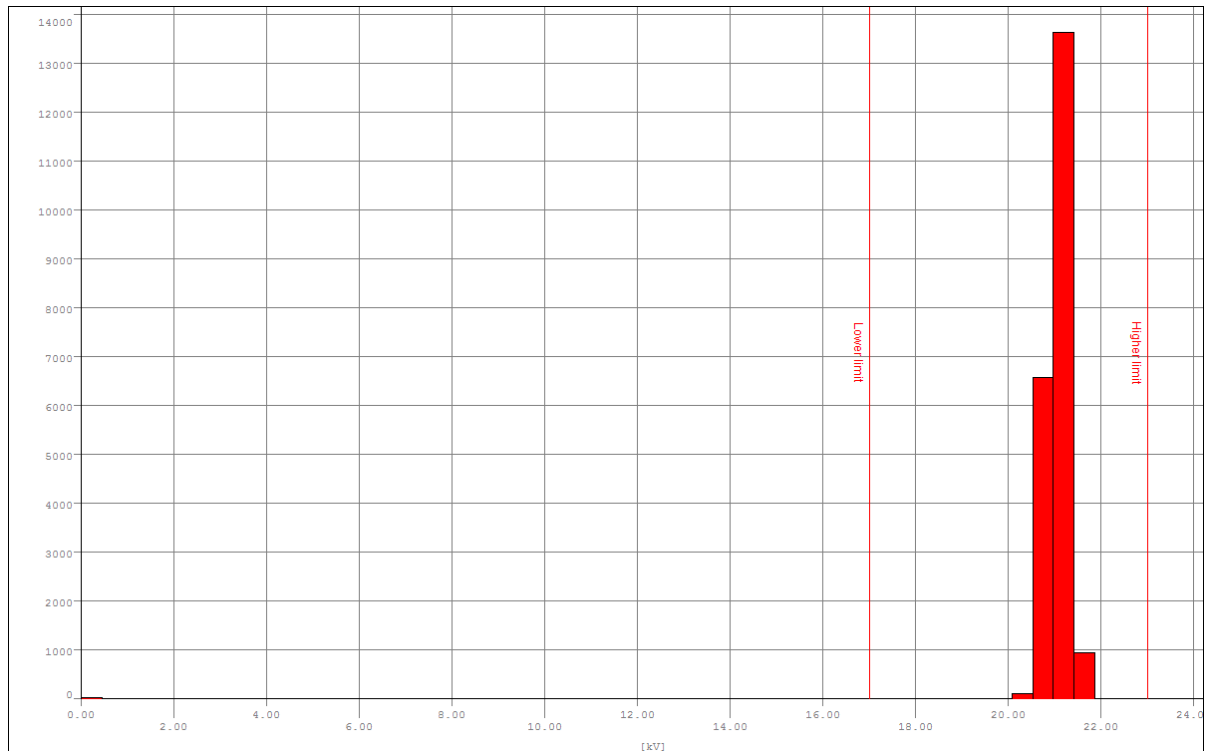
## Voltage effective L3-L2 - 2nd Test

### Limits

Lower limit	17000.00V
Higher limit	23000.00V
Percentage	100.00%

### Results

Min value	7.00V
Average value	21051.91V
Max value	21868.80V
Undercut	0.10%
Overcut	0.00%
Total out	0.10%
Result	Failed
Recording vacancy	59.51%



- Voltage effective L3-L2 (10m) [UMG511]
- Marker Lower limit
- Marker Higher limit



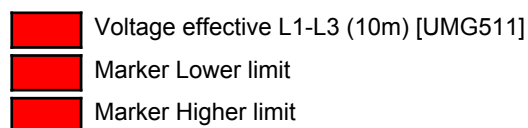
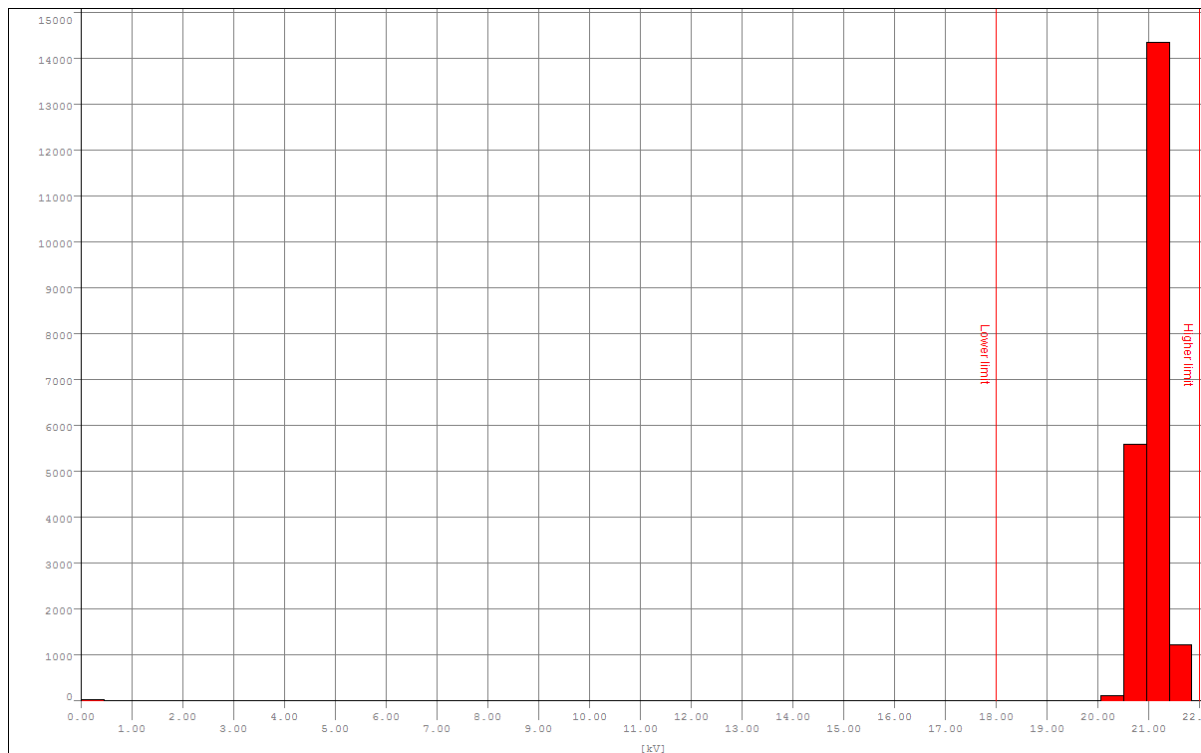
## Voltage effective L1-L3 - 1st Test

### Limits

Lower limit	18000.00V
Higher limit	22000.00V
Percentage	99.00%

### Results

Min value	2.29V
Average value	21060.41V
Max value	21848.54V
Undercut	0.11%
Overcut	0.00%
Total out	0.11%
Result	Passed
Recording vacancy	59.51%



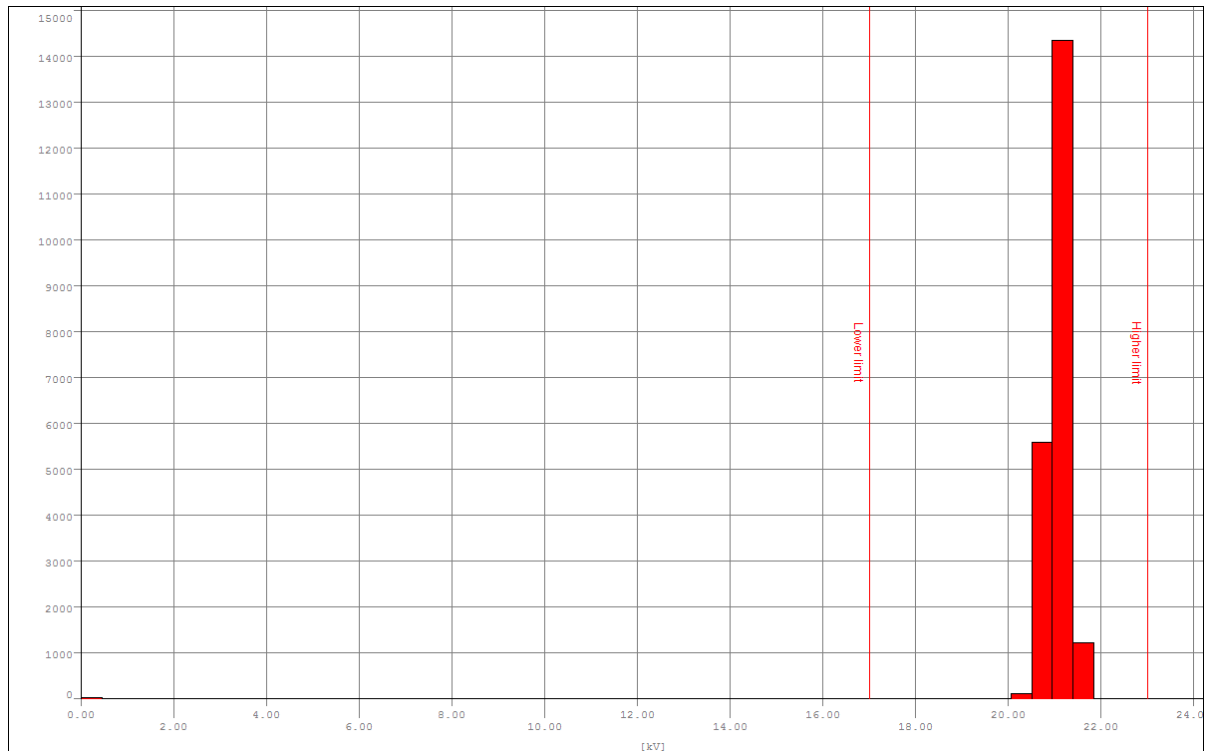
## Voltage effective L1-L3 - 2nd Test

### Limits

Lower limit	17000.00V
Higher limit	23000.00V
Percentage	100.00%

### Results

Min value	2.29V
Average value	21060.41V
Max value	21848.54V
Undercut	0.10%
Overcut	0.00%
Total out	0.10%
Result	Failed
Recording vacancy	59.51%



- Voltage effective L1-L3 (10m) [UMG511]
- Marker Lower limit
- Marker Higher limit

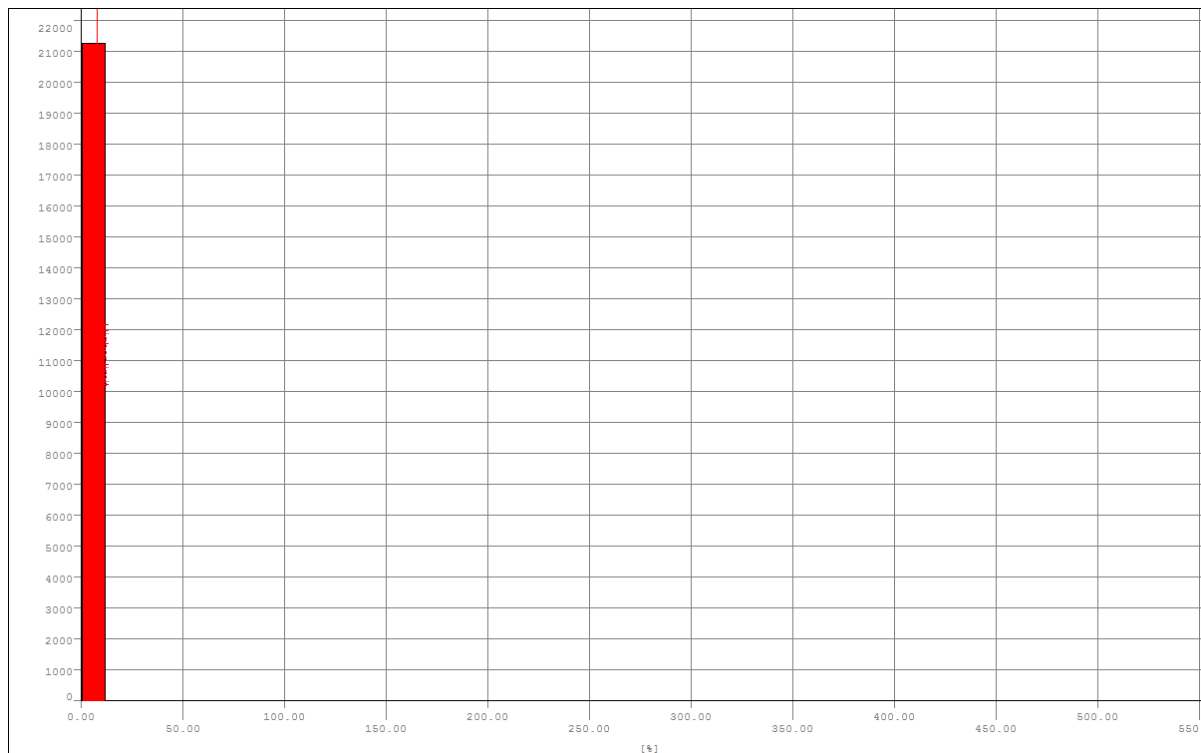
## THD U L2-L1

### Limits

Lower limit	--
Higher limit	8.00%
Percentage	95.00%

### Results

Min value	0.40%
Average value	1.14%
Max value	547.19%
Undercut	--
Overcut	0.11%
Total out	0.11%
Result	Passed
Recording vacancy	59.51%



THD U L2-L1 (10m) [UMG511]
  Marker Higher limit

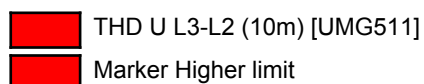
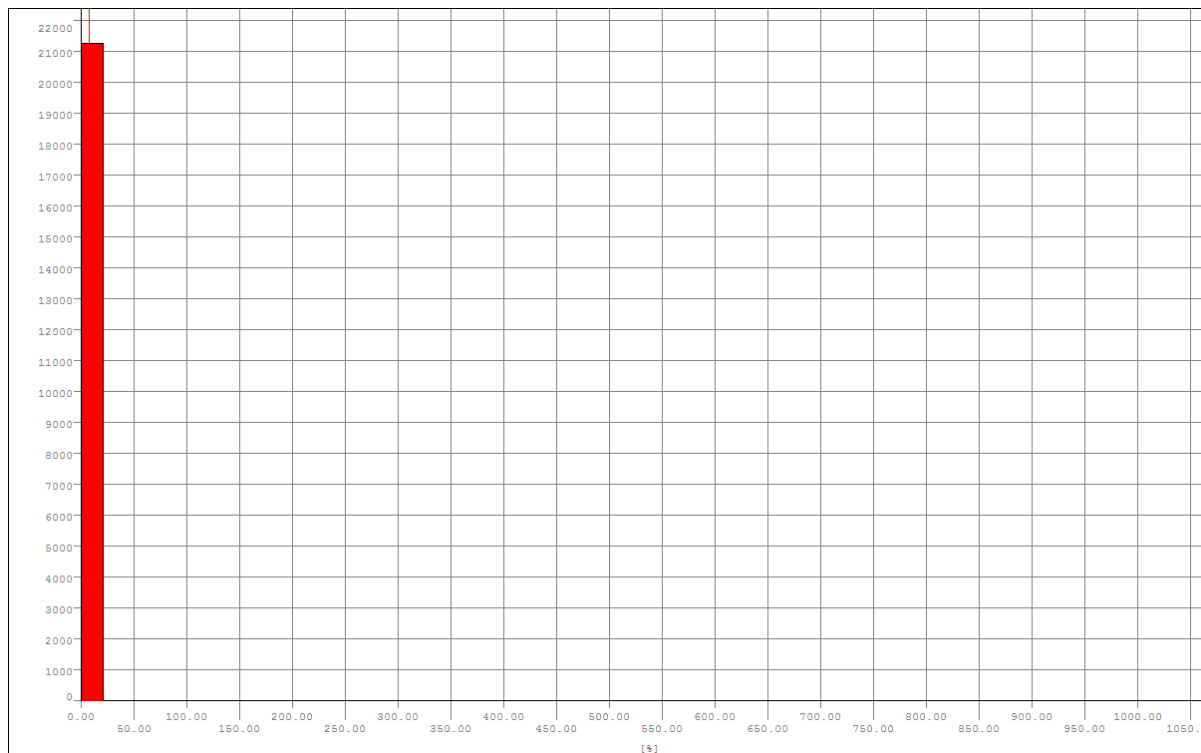
## THD U L3-L2

### Limits

Lower limit	--
Higher limit	8.00%
Percentage	95.00%

### Results

Min value	0.31%
Average value	1.28%
Max value	1005.55%
Undercut	--
Overcut	0.11%
Total out	0.11%
Result	Passed
Recording vacancy	59.51%



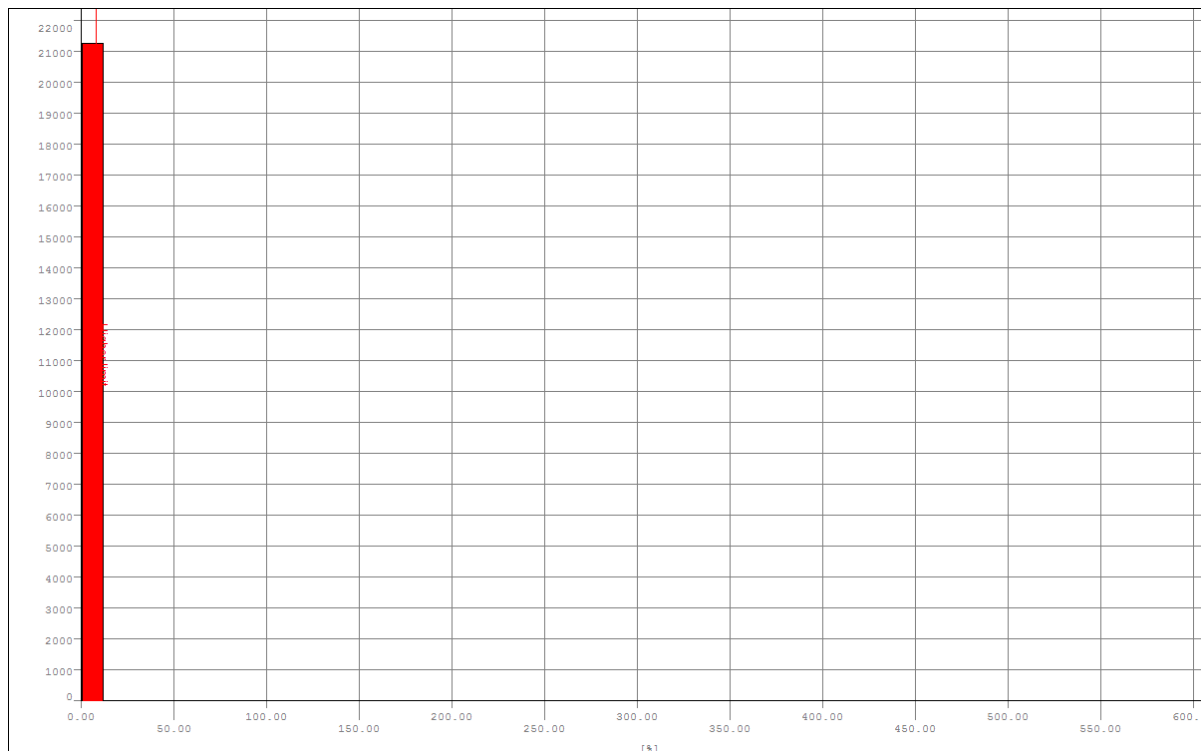
## THD U L1-L3

### Limits

Lower limit	--
Higher limit	8.00%
Percentage	95.00%

### Results

Min value	0.38%
Average value	1.19%
Max value	567.13%
Undercut	--
Overcut	0.11%
Total out	0.11%
Result	Passed
Recording vacancy	59.51%



THD U L1-L3 (10m) [UMG511]

Marker Higher limit

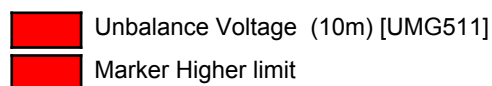
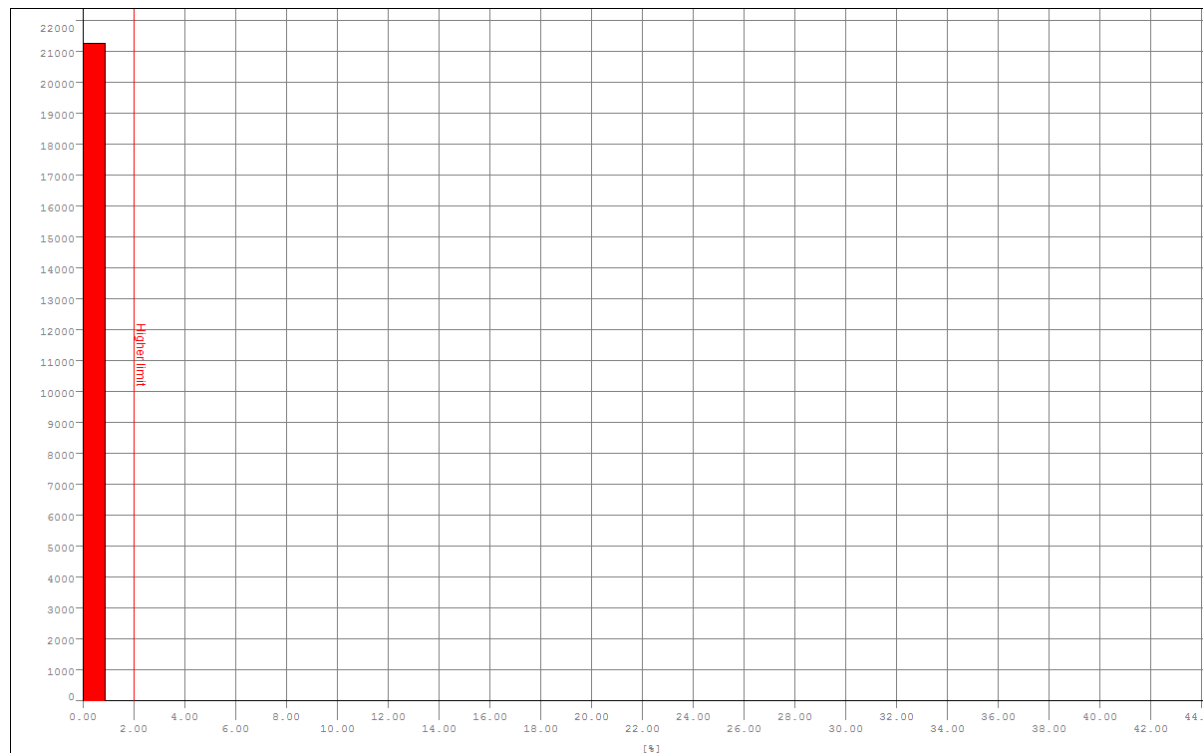
## Unbalance Voltage

### Limits

Lower limit	--
Higher limit	2.00%
Percentage	95.00%

### Results

Min value	0.00%
Average value	0.42%
Max value	43.08%
Undercut	--
Overcut	0.05%
Total out	0.05%
Result	Passed
Recording vacancy	59.51%



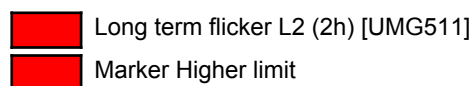
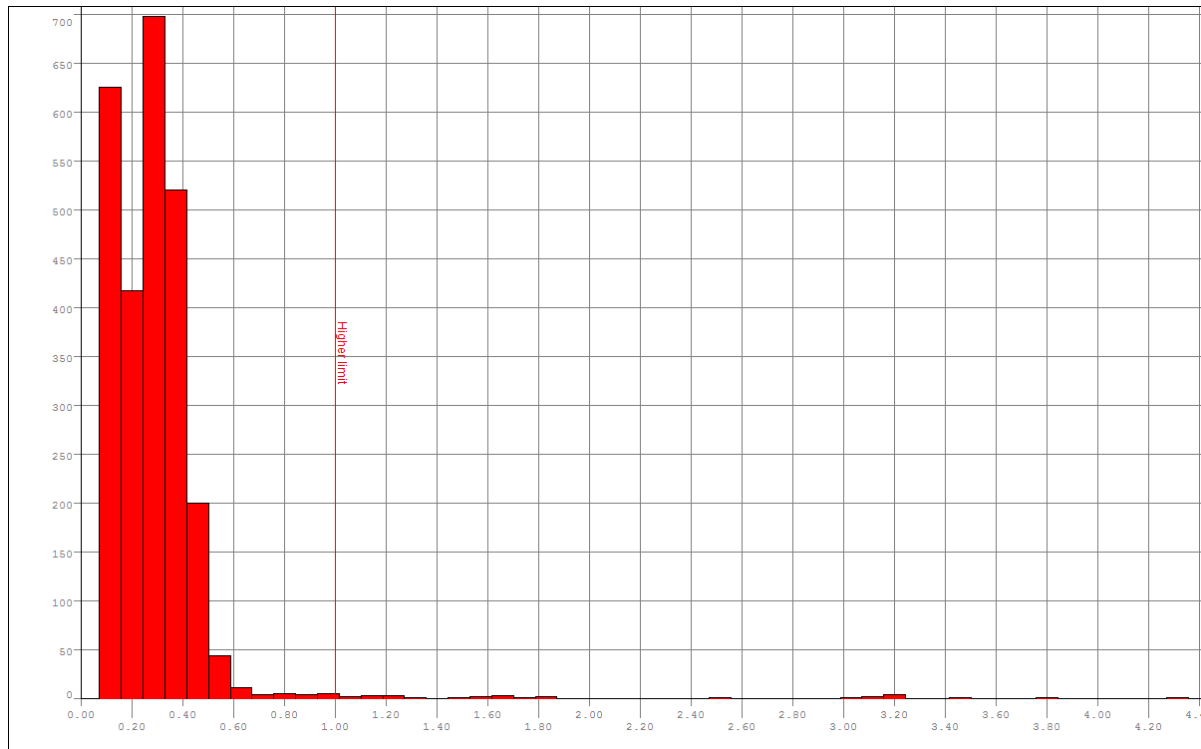
## Long term flicker L2

### Limits

Lower limit	--
Higher limit	1.00
Percentage	95.00%

### Results

Min value	0.07
Average value	0.29
Max value	4.27
Undercut	--
Overcut	1.17%
Total out	1.17%
Result	Passed
Recording vacancy	41.48%



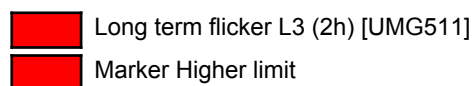
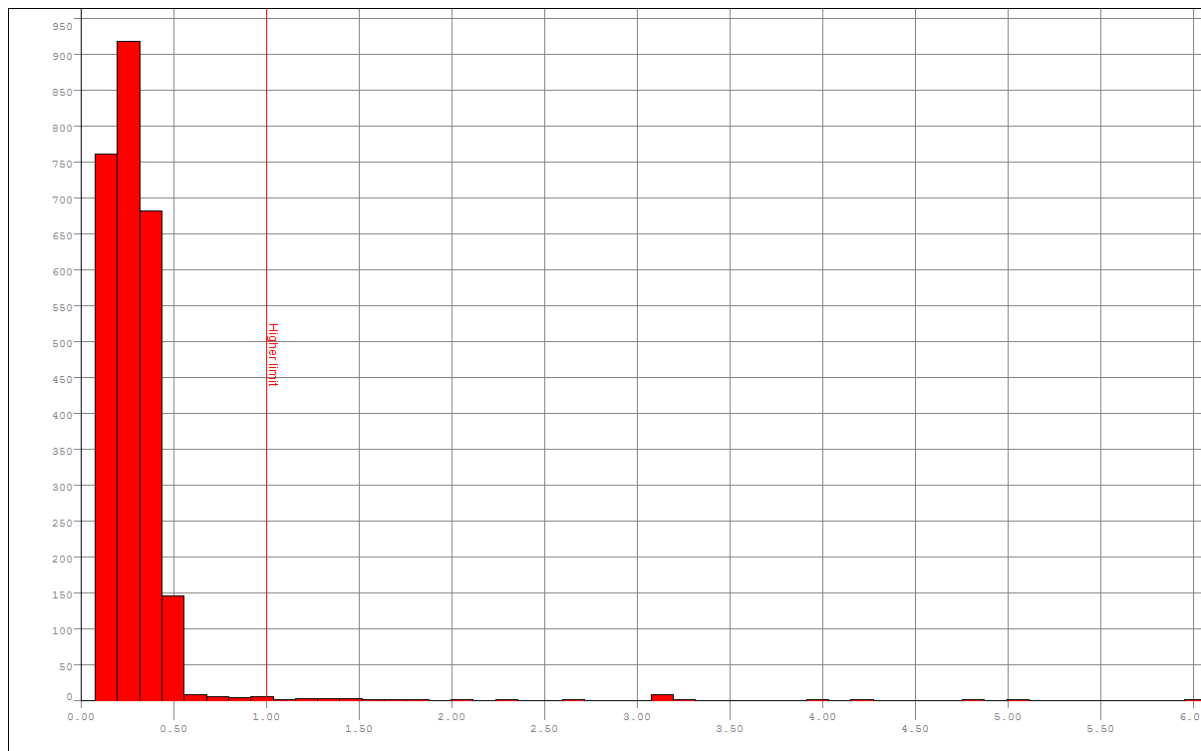
## Long term flicker L3

### Limits

Lower limit	--
Higher limit	1.00
Percentage	95.00%

### Results

Min value	0.08
Average value	0.29
Max value	5.95
Undercut	--
Overcut	1.37%
Total out	1.37%
Result	Passed
Recording vacancy	41.48%





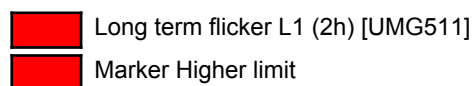
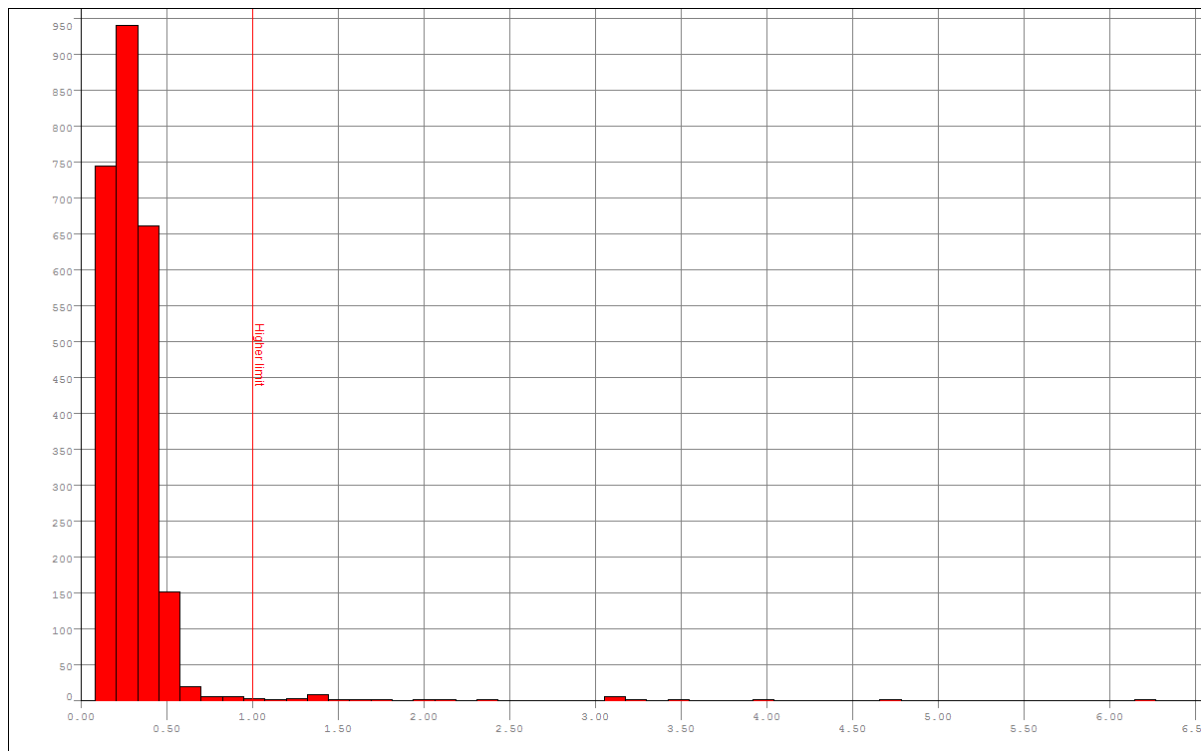
## Long term flicker L1

### Limits

Lower limit	--
Higher limit	1.00
Percentage	95.00%

### Results

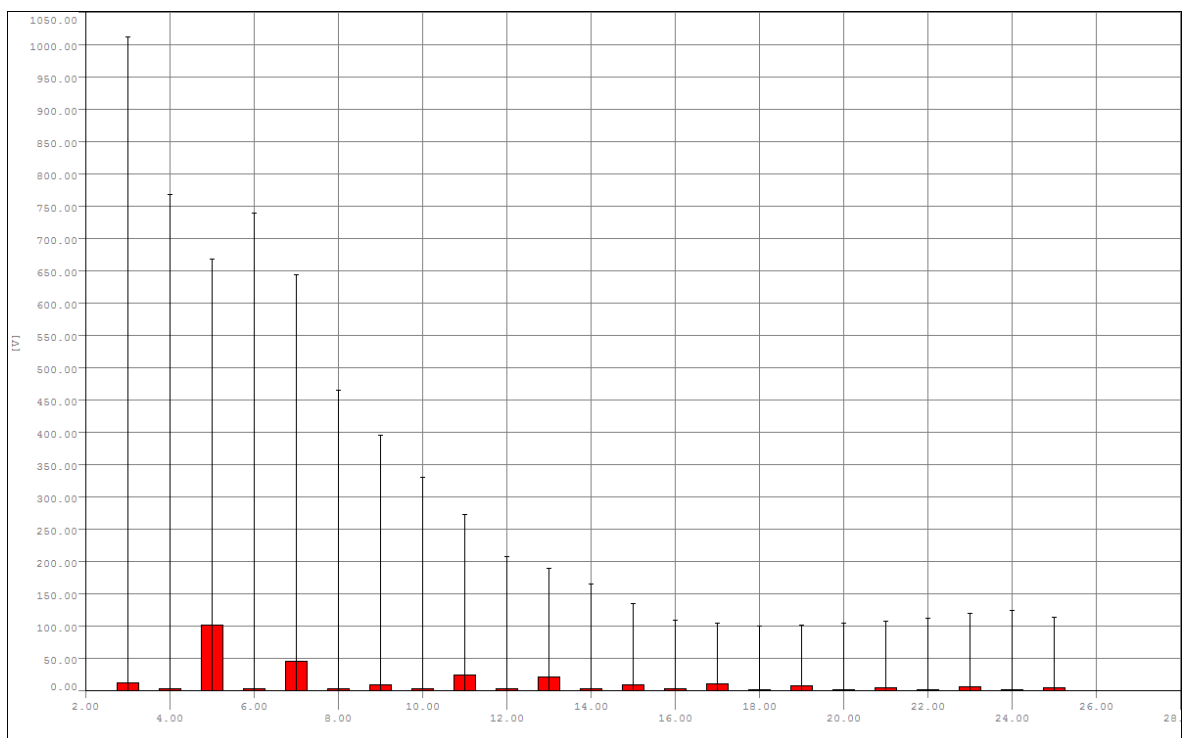
Min value	0.08
Average value	0.31
Max value	6.14
Undercut	--
Overcut	1.29%
Total out	1.29%
Result	Passed
Recording vacancy	41.48%



## Harmonics voltage (rel.) L2

Value	Higher limit	Min value	Overcut
	Percentage	Average value Max value	Recording vacancy Result
2.Harmonic Voltage L2	2.00%	0.02%	0.09%
		0.04%	59.51%
	95.00%	43.54%	Passed
3.Harmonic Voltage L2	5.00%	0.03%	0.09%
		0.12%	59.51%
	95.00%	26.63%	Passed
4.Harmonic Voltage L2	1.00%	0.02%	0.09%
		0.03%	59.51%
	95.00%	9.19%	Passed
5.Harmonic Voltage L2	6.00%	0.06%	0.02%
		0.84%	59.51%
	95.00%	10.31%	Passed
6.Harmonic Voltage L2	0.50%	0.02%	0.10%
		0.03%	59.51%
	95.00%	5.35%	Passed
7.Harmonic Voltage L2	5.00%	0.05%	0.02%
		0.38%	59.51%
	95.00%	7.60%	Passed
8.Harmonic Voltage L2	0.50%	0.02%	0.09%
		0.03%	59.51%
	95.00%	4.40%	Passed
9.Harmonic Voltage L2	1.50%	0.02%	0.09%
		0.08%	59.51%
	95.00%	5.52%	Passed
10.Harmonic Voltage L2	0.50%	0.01%	0.09%
		0.02%	59.51%
	95.00%	5.32%	Passed
11.Harmonic Voltage L2	3.50%	0.04%	0.00%
		0.20%	59.51%
	95.00%	4.39%	Passed
12.Harmonic Voltage L2	0.50%	0.01%	0.09%
		0.02%	59.51%
	95.00%	3.20%	Passed
13.Harmonic Voltage L2	3.00%	0.02%	0.01%
		0.18%	59.51%
	95.00%	3.76%	Passed
14.Harmonic Voltage L2	0.50%	0.01%	0.09%
		0.02%	59.51%
	95.00%	3.50%	Passed
15.Harmonic Voltage L2	0.50%	0.02%	0.09%
		0.07%	59.51%
	95.00%	3.13%	Passed
16.Harmonic Voltage L2	0.50%	0.01%	0.09%
		0.02%	59.51%
	95.00%	3.13%	Passed
17.Harmonic Voltage L2	2.00%	0.02%	0.05%
		0.09%	59.51%
	95.00%	3.12%	Passed
18.Harmonic Voltage L2	0.50%	0.01%	0.09%
		0.02%	59.51%
	95.00%	3.11%	Passed

Value	Higher limit	Min value	Overcut
	Percentage	Average value	Recording vacancy
		Max value	Result
19.Harmonic Voltage L2	1.50%	0.02%	0.08%
	95.00%	0.07%	59.51%
		3.14%	Passed
20.Harmonic Voltage L2	0.50%	0.01%	0.09%
	95.00%	0.02%	59.51%
		3.11%	Passed
21.Harmonic Voltage L2	0.50%	0.01%	0.09%
	95.00%	0.04%	59.51%
		3.14%	Passed
22.Harmonic Voltage L2	0.50%	0.01%	0.09%
	95.00%	0.02%	59.51%
		3.06%	Passed
23.Harmonic Voltage L2	1.50%	0.01%	0.07%
	95.00%	0.06%	59.51%
		3.12%	Passed
24.Harmonic Voltage L2	0.50%	0.01%	0.09%
	95.00%	0.02%	59.51%
		3.15%	Passed
25.Harmonic Voltage L2	1.50%	0.01%	0.07%
	95.00%	0.04%	59.51%
		3.14%	Passed

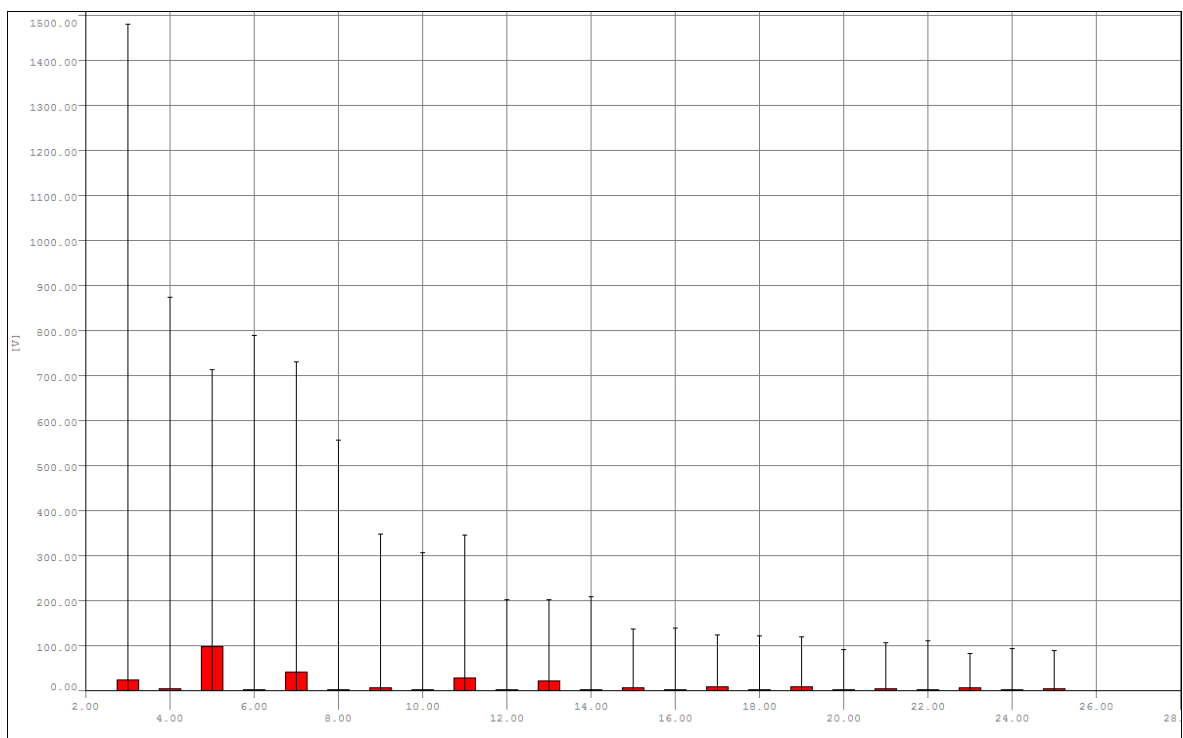


Harmonics voltage L2 [UMG511]

## Harmonics voltage (rel.) L3

Value	Higher limit	Min value	Overcut
	Percentage	Average value Max value	Recording vacancy Result
2.Harmonic Voltage L3	2.00%	0.02%	0.10%
		0.04%	59.51%
	95.00%	10.61%	Passed
3.Harmonic Voltage L3	5.00%	0.06%	0.07%
		0.20%	59.51%
	95.00%	20.89%	Passed
4.Harmonic Voltage L3	1.00%	0.02%	0.09%
		0.03%	59.51%
	95.00%	7.70%	Passed
5.Harmonic Voltage L3	6.00%	0.06%	0.05%
		0.81%	59.51%
	95.00%	9.31%	Passed
6.Harmonic Voltage L3	0.50%	0.02%	0.10%
		0.03%	59.51%
	95.00%	6.99%	Passed
7.Harmonic Voltage L3	5.00%	0.04%	0.05%
		0.34%	59.51%
	95.00%	7.46%	Passed
8.Harmonic Voltage L3	0.50%	0.01%	0.08%
		0.03%	59.51%
	95.00%	6.87%	Passed
9.Harmonic Voltage L3	1.50%	0.02%	0.07%
		0.06%	59.51%
	95.00%	6.86%	Passed
10.Harmonic Voltage L3	0.50%	0.01%	0.07%
		0.02%	59.51%
	95.00%	6.81%	Passed
11.Harmonic Voltage L3	3.50%	0.05%	0.07%
		0.23%	59.51%
	95.00%	6.83%	Passed
12.Harmonic Voltage L3	0.50%	0.01%	0.07%
		0.02%	59.51%
	95.00%	6.74%	Passed
13.Harmonic Voltage L3	3.00%	0.02%	0.07%
		0.18%	59.51%
	95.00%	6.81%	Passed
14.Harmonic Voltage L3	0.50%	0.01%	0.07%
		0.02%	59.51%
	95.00%	6.71%	Passed
15.Harmonic Voltage L3	0.50%	0.02%	0.07%
		0.06%	59.51%
	95.00%	6.84%	Passed
16.Harmonic Voltage L3	0.50%	0.01%	0.07%
		0.02%	59.51%
	95.00%	6.73%	Passed
17.Harmonic Voltage L3	2.00%	0.02%	0.07%
		0.08%	59.51%
	95.00%	6.81%	Passed
18.Harmonic Voltage L3	0.50%	0.01%	0.07%
		0.02%	59.51%
	95.00%	6.72%	Passed

Value	Higher limit	Min value	Overcut
	Percentage	Average value	Recording vacancy
		Max value	Result
19.Harmonic Voltage L3	1.50%	0.01%	0.07%
	95.00%	0.07%	59.51%
20.Harmonic Voltage L3	0.50%	0.01%	0.07%
	95.00%	0.02%	59.51%
21.Harmonic Voltage L3	0.50%	0.01%	0.07%
	95.00%	0.04%	59.51%
22.Harmonic Voltage L3	0.50%	0.01%	0.07%
	95.00%	0.02%	59.51%
23.Harmonic Voltage L3	1.50%	0.01%	0.07%
	95.00%	0.05%	59.51%
24.Harmonic Voltage L3	0.50%	0.01%	0.07%
	95.00%	0.02%	59.51%
25.Harmonic Voltage L3	1.50%	0.01%	0.07%
	95.00%	0.04%	59.51%
		6.87%	Passed
		6.80%	Passed
		6.95%	Passed
		6.90%	Passed
		6.89%	Passed
		6.82%	Passed
		6.98%	Passed

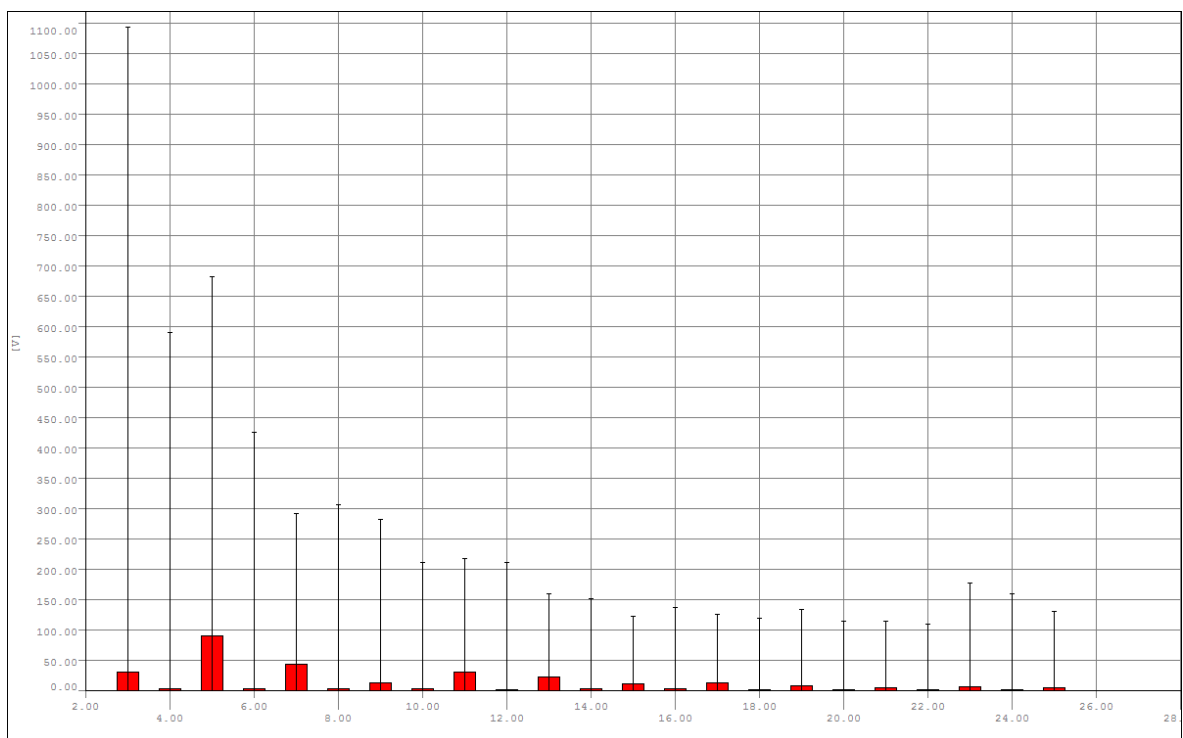


Harmonics voltage L3 [UMG511]

## Harmonics voltage (rel.) L1

Value	Higher limit	Min value	Overcut
	Percentage	Average value Max value	Recording vacancy Result
2.Harmonic Voltage L1	2.00%	0.02%	0.09%
		0.04%	59.51%
	95.00%	10.56%	Passed
3.Harmonic Voltage L1	5.00%	0.09%	0.07%
		0.26%	59.51%
	95.00%	18.54%	Passed
4.Harmonic Voltage L1	1.00%	0.02%	0.08%
		0.03%	59.51%
	95.00%	6.97%	Passed
5.Harmonic Voltage L1	6.00%	0.06%	0.06%
		0.75%	59.51%
	95.00%	8.66%	Passed
6.Harmonic Voltage L1	0.50%	0.02%	0.09%
		0.03%	59.51%
	95.00%	6.43%	Passed
7.Harmonic Voltage L1	5.00%	0.05%	0.05%
		0.36%	59.51%
	95.00%	6.80%	Passed
8.Harmonic Voltage L1	0.50%	0.02%	0.07%
		0.03%	59.51%
	95.00%	6.46%	Passed
9.Harmonic Voltage L1	1.50%	0.02%	0.07%
		0.11%	59.51%
	95.00%	6.36%	Passed
10.Harmonic Voltage L1	0.50%	0.01%	0.07%
		0.02%	59.51%
	95.00%	6.17%	Passed
11.Harmonic Voltage L1	3.50%	0.06%	0.06%
		0.26%	59.51%
	95.00%	6.30%	Passed
12.Harmonic Voltage L1	0.50%	0.01%	0.07%
		0.02%	59.51%
	95.00%	6.23%	Passed
13.Harmonic Voltage L1	3.00%	0.03%	0.07%
		0.19%	59.51%
	95.00%	6.34%	Passed
14.Harmonic Voltage L1	0.50%	0.01%	0.07%
		0.03%	59.51%
	95.00%	6.16%	Passed
15.Harmonic Voltage L1	0.50%	0.02%	0.07%
		0.10%	59.51%
	95.00%	6.25%	Passed
16.Harmonic Voltage L1	0.50%	0.01%	0.07%
		0.02%	59.51%
	95.00%	6.23%	Passed
17.Harmonic Voltage L1	2.00%	0.02%	0.07%
		0.11%	59.51%
	95.00%	6.29%	Passed
18.Harmonic Voltage L1	0.50%	0.01%	0.07%
		0.02%	59.51%
	95.00%	6.20%	Passed

Value	Higher limit	Min value	Overcut
	Percentage	Average value	Recording vacancy
		Max value	Result
19.Harmonic Voltage L1	1.50%	0.02%	0.07%
	95.00%	0.08%	59.51%
		6.31%	Passed
20.Harmonic Voltage L1	0.50%	0.01%	0.07%
	95.00%	0.02%	59.51%
		6.26%	Passed
21.Harmonic Voltage L1	0.50%	0.01%	0.07%
	95.00%	0.04%	59.51%
		6.35%	Passed
22.Harmonic Voltage L1	0.50%	0.01%	0.07%
	95.00%	0.02%	59.51%
		6.29%	Passed
23.Harmonic Voltage L1	1.50%	0.01%	0.07%
	95.00%	0.06%	59.51%
		6.33%	Passed
24.Harmonic Voltage L1	0.50%	0.01%	0.07%
	95.00%	0.02%	59.51%
		6.38%	Passed
25.Harmonic Voltage L1	1.50%	0.01%	0.07%
	95.00%	0.04%	59.51%
		6.36%	Passed



Harmonics voltage L1 [UMG511]

## Undervoltage

598 Events have been found.

Residual voltage u %	Duration t				
	10 - 200ms	> 200ms	> 500ms	> 1s	> 5s - 60s
< 90 - 80 %	0	0	0	0	0
< 80 - 70 %	0	0	0	0	0
< 70 - 40 %	0	0	0	0	0
< 40 - 5 %	0	0	0	0	0
< 5 %	178	34	21	100	143

122 out of ranges!

### 100 deepest events

Starttime	Length	Input	Eventtype	Limit	Min	Avg	Max
Endtime							
1/10/15 12:55:38 PM'995	1m 28s	L1	Voltage outage	10.30	0.00	0.00	0.00
1/10/15 12:57:07 PM'916							
1/10/15 12:58:41 PM'636	2m 5s	L1	Voltage outage	10.30	0.00	0.00	8.41
1/10/15 1:00:47 PM'559							
1/10/15 1:02:29 PM'285	1m 8s	L1	Voltage outage	10.30	0.00	0.00	5.95
1/10/15 1:03:37 PM'937							
1/10/15 1:03:57 PM'179	5m 51s	L1	Voltage outage	10.30	0.00	0.00	0.00
1/10/15 1:09:48 PM'187							
1/31/15 1:02:39 AM'118	49.701ms	L1	Voltage outage	10.30	0.00	0.00	0.00
1/31/15 1:02:39 AM'168							
1/31/15 1:02:39 AM'847	129.351ms	L1	Voltage outage	10.30	0.00	0.00	0.00
1/31/15 1:02:39 AM'976							
1/31/15 1:02:40 AM'414	330.051ms	L1	Voltage outage	10.30	0.00	0.00	5.95
1/31/15 1:02:40 AM'744							
1/31/15 1:02:40 AM'904	27.725s	L1	Voltage outage	10.30	0.00	0.00	5.95
1/31/15 1:03:08 AM'630							
1/31/15 1:03:10 AM'056	40.001ms	L1	Voltage outage	10.30	0.00	0.00	0.00
1/31/15 1:03:10 AM'096							
1/31/15 1:03:10 AM'728	89.350ms	L1	Voltage outage	10.30	0.00	0.00	0.00
1/31/15 1:03:10 AM'818							
1/31/15 1:03:11 AM'452	307.750ms	L1	Voltage outage	10.30	0.00	0.00	8.41
1/31/15 1:03:11 AM'760							
1/31/15 1:03:11 AM'840	1m 25s	L1	Voltage outage	10.30	0.00	0.00	0.00
1/31/15 1:04:37 AM'020							
1/31/15 1:04:38 AM'969	51.500ms	L1	Voltage outage	10.30	0.00	0.00	0.00
1/31/15 1:04:39 AM'021							
1/31/15 1:04:39 AM'654	121.300ms	L1	Voltage outage	10.30	0.00	0.00	5.95
1/31/15 1:04:39 AM'775							
1/31/15 1:04:40 AM'302	6m 20s	L1	Voltage outage	10.30	0.00	0.00	0.00
1/31/15 1:11:00 AM'565							
1/31/15 1:11:02 AM'485	40.750ms	L1	Voltage outage	10.30	0.00	0.00	0.00
1/31/15 1:11:02 AM'526							
1/31/15 1:11:03 AM'195	110.751ms	L1	Voltage outage	10.30	0.00	0.00	0.00
1/31/15 1:11:03 AM'306							
1/31/15 1:11:03 AM'807	4m 6s	L1	Voltage outage	10.30	0.00	0.00	8.41
1/31/15 1:15:10 AM'700							
1/31/15 1:15:12 AM'614	40.351ms	L1	Voltage outage	10.30	0.00	0.00	8.41
1/31/15 1:15:12 AM'654							
1/31/15 1:15:13 AM'283	102.301ms	L1	Voltage outage	10.30	0.00	0.00	5.95
1/31/15 1:15:13 AM'385							
1/31/15 1:15:13 AM'894	244.850ms	L1	Voltage outage	10.30	0.00	0.00	8.41
1/31/15 1:15:14 AM'139							
1/31/15 1:15:14 AM'384	5m 1s	L1	Voltage outage	10.30	0.00	0.00	0.00
1/31/15 1:20:15 AM'421							
1/31/15 1:20:17 AM'742	10.051ms	L1	Voltage outage	10.30	0.00	0.00	0.00
1/31/15 1:20:17 AM'752							
1/31/15 1:20:17 AM'943	60.351ms	L1	Voltage outage	10.30	0.00	0.00	8.41
1/31/15 1:20:18 AM'003							



Starttime	Length	Input	Eventtype	Limit	Min	Avg	Max
Endtime							
1/31/15 1:20:18 AM'074	19m 14s	L1	Voltage outage	10.30	0.00	0.00	0.00
1/31/15 1:39:32 AM'944							
1/31/15 1:39:34 AM'289	1m 18s	L1	Voltage outage	10.30	0.00	0.00	0.00
1/31/15 1:40:52 AM'916							
1/31/15 1:40:54 AM'154	1h 20m	L1	Voltage outage	10.30	0.00	0.00	0.00
1/31/15 3:01:40 AM'900							
1/31/15 3:01:42 AM'205	19.901ms	L1	Voltage outage	10.30	0.00	0.00	0.00
1/31/15 3:01:42 AM'225							
1/31/15 3:01:42 AM'255	3m 34s	L1	Voltage outage	10.30	0.00	0.00	8.41
1/31/15 3:05:16 AM'663							
1/31/15 3:05:16 AM'693	47m 33s	L1	Voltage outage	10.30	0.00	0.00	8.41
1/31/15 3:52:50 AM'026							
3/14/15 2:33:43 PM'209	51.401ms	L1	Voltage outage	10.30	0.00	0.00	0.00
3/14/15 2:33:43 PM'261							
3/14/15 2:33:43 PM'928	143.850ms	L1	Voltage outage	10.30	0.00	0.00	0.00
3/14/15 2:33:44 PM'071							
3/28/15 10:23:46 AM'526	89.956ms	L1	Voltage outage	10.30	0.00	0.00	0.00
3/28/15 10:23:46 AM'616							
3/28/15 10:23:46 AM'676	4.822s	L1	Voltage outage	10.30	0.00	0.00	0.00
3/28/15 10:23:51 AM'498							
3/28/15 10:23:51 AM'608	8m 4s	L1	Voltage outage	10.30	0.00	0.00	0.00
3/28/15 10:31:56 AM'103							
3/28/15 10:31:56 AM'203	5.007s	L1	Voltage outage	10.30	0.00	0.00	0.00
3/28/15 10:32:01 AM'210							
3/28/15 10:32:01 AM'310	1m 27s	L1	Voltage outage	10.30	0.00	0.00	0.00
3/28/15 10:33:28 AM'498							
3/28/15 10:33:28 AM'599	4.999s	L1	Voltage outage	10.30	0.00	0.00	0.00
3/28/15 10:33:33 AM'597							
3/28/15 10:33:33 AM'698	7m 42s	L1	Voltage outage	10.30	0.00	0.00	0.00
3/28/15 10:41:16 AM'429							
4/11/15 2:56:12 PM'862	4.741s	L1	Voltage outage	10.30	0.00	0.00	8.41
4/11/15 2:56:17 PM'603							
4/14/15 3:19:12 PM'292	624.652ms	L1	Voltage outage	10.30	0.00	0.00	8.41
4/14/15 3:19:12 PM'917							
4/14/15 3:19:12 PM'937	436.517ms	L1	Voltage outage	10.30	0.00	0.00	8.41
4/14/15 3:19:13 PM'373							
4/14/15 3:19:13 PM'393	19.551ms	L1	Voltage outage	10.30	0.00	0.00	0.00
4/14/15 3:19:13 PM'412							
4/14/15 3:19:13 PM'432	805.732ms	L1	Voltage outage	10.30	0.00	0.00	8.41
4/14/15 3:19:14 PM'238							
4/14/15 3:19:14 PM'257	179.058ms	L1	Voltage outage	10.30	0.00	0.00	5.95
4/14/15 3:19:14 PM'436							
4/14/15 3:19:14 PM'456	20.002ms	L1	Voltage outage	10.30	0.00	0.00	0.00
4/14/15 3:19:14 PM'476							
4/14/15 3:19:14 PM'496	39.852ms	L1	Voltage outage	10.30	0.00	0.00	0.00
4/14/15 3:19:14 PM'536							
4/14/15 3:19:14 PM'556	99.554ms	L1	Voltage outage	10.30	0.00	0.00	0.00
4/14/15 3:19:14 PM'656							
4/14/15 3:19:14 PM'675	97.604ms	L1	Voltage outage	10.30	0.00	0.00	0.00
4/14/15 3:19:14 PM'773							
4/14/15 3:19:14 PM'793	146.456ms	L1	Voltage outage	10.30	0.00	0.00	0.00
4/14/15 3:19:14 PM'939							
4/14/15 3:19:14 PM'958	97.754ms	L1	Voltage outage	10.30	0.00	0.00	0.00
4/14/15 3:19:15 PM'056							
4/14/15 3:19:15 PM'076	235.459ms	L1	Voltage outage	10.30	0.00	0.00	8.41
4/14/15 3:19:15 PM'311							
4/14/15 3:19:15 PM'331	68.953ms	L1	Voltage outage	10.30	0.00	0.00	8.41
4/14/15 3:19:15 PM'400							
4/14/15 3:19:15 PM'420	138.656ms	L1	Voltage outage	10.30	0.00	0.00	8.41
4/14/15 3:19:15 PM'558							
4/14/15 3:19:15 PM'578	39.651ms	L1	Voltage outage	10.30	0.00	0.00	0.00
4/14/15 3:19:15 PM'618							
4/14/15 3:19:15 PM'637	139.356ms	L1	Voltage outage	10.30	0.00	0.00	8.41
4/14/15 3:19:15 PM'777							
4/14/15 3:19:15 PM'797	336.912ms	L1	Voltage outage	10.30	0.00	0.00	8.41
4/14/15 3:19:16 PM'133							
4/14/15 3:19:16 PM'153	11.835s	L1	Voltage outage	10.30	0.00	0.00	8.41
4/14/15 3:19:27 PM'988							
4/14/15 3:19:27 PM'998	8.817s	L1	Voltage outage	10.30	0.00	0.00	8.41
4/14/15 3:19:36 PM'815							

Starttime	Length	Input	Eventtype	Limit	Min	Avg	Max
Endtime							
4/14/15 3:19:36 PM'826	12.063s	L1	Voltage outage	10.30	0.00	0.00	8.41
4/14/15 3:19:48 PM'888							
4/14/15 3:19:48 PM'908	13.911s	L1	Voltage outage	10.30	0.00	0.00	8.41
4/14/15 3:20:02 PM'819							
4/14/15 3:20:02 PM'839	3.811s	L1	Voltage outage	10.30	0.00	0.00	8.41
4/14/15 3:20:06 PM'649							
4/14/15 3:20:06 PM'669	59.953ms	L1	Voltage outage	10.30	0.00	0.00	0.00
4/14/15 3:20:06 PM'729							
4/14/15 3:20:06 PM'749	20.001ms	L1	Voltage outage	10.30	0.00	0.00	0.00
4/14/15 3:20:06 PM'769							
4/14/15 3:20:06 PM'789	40.052ms	L1	Voltage outage	10.30	0.00	0.00	0.00
4/14/15 3:20:06 PM'829							
4/14/15 3:20:06 PM'849	380.062ms	L1	Voltage outage	10.30	0.00	0.00	8.41
4/14/15 3:20:07 PM'229							
4/14/15 3:20:07 PM'249	320.079ms	L1	Voltage outage	10.30	0.00	0.00	0.00
4/14/15 3:20:07 PM'569							
4/14/15 3:20:07 PM'590	39.953ms	L1	Voltage outage	10.30	0.00	0.00	5.95
4/14/15 3:20:07 PM'630							
4/14/15 3:20:07 PM'650	19.982ms	L1	Voltage outage	10.30	0.00	5.95	8.41
4/14/15 3:20:07 PM'669							
4/14/15 3:20:07 PM'689	50.003ms	L1	Voltage outage	10.30	0.00	0.00	0.00
4/14/15 3:20:07 PM'739							
4/14/15 3:20:07 PM'759	150.173ms	L1	Voltage outage	10.30	0.00	0.00	5.95
4/14/15 3:20:07 PM'910							
4/14/15 3:20:07 PM'930	100.054ms	L1	Voltage outage	10.30	0.00	0.00	8.41
4/14/15 3:20:08 PM'030							
4/14/15 3:20:08 PM'050	19.986ms	L1	Voltage outage	10.30	0.00	0.00	0.00
4/14/15 3:20:08 PM'070							
4/14/15 3:20:08 PM'090	100.004ms	L1	Voltage outage	10.30	0.00	0.00	0.00
4/14/15 3:20:08 PM'190							
4/14/15 3:20:08 PM'220	9.952ms	L1	Voltage outage	10.30	0.00	0.00	0.00
4/14/15 3:20:08 PM'230							
4/14/15 3:20:08 PM'260	9.951ms	L1	Voltage outage	10.30	0.00	0.00	0.00
4/14/15 3:20:08 PM'270							
4/14/15 3:20:08 PM'300	10.051ms	L1	Voltage outage	10.30	0.00	0.00	0.00
4/14/15 3:20:08 PM'310							
4/14/15 3:20:08 PM'330	29.952ms	L1	Voltage outage	10.30	0.00	0.00	8.41
4/14/15 3:20:08 PM'360							
4/14/15 3:20:08 PM'380	290.058ms	L1	Voltage outage	10.30	0.00	0.00	8.41
4/14/15 3:20:08 PM'670							
4/14/15 3:20:08 PM'690	19.901ms	L1	Voltage outage	10.30	0.00	0.00	0.00
4/14/15 3:20:08 PM'710							
4/14/15 3:20:08 PM'730	40.052ms	L1	Voltage outage	10.30	0.00	0.00	0.00
4/14/15 3:20:08 PM'770							
4/14/15 3:20:08 PM'790	19.951ms	L1	Voltage outage	10.30	0.00	0.00	0.00
4/14/15 3:20:08 PM'810							
4/14/15 3:20:08 PM'830	240.069ms	L1	Voltage outage	10.30	0.00	0.00	8.41
4/14/15 3:20:09 PM'070							
4/14/15 3:20:09 PM'090	139.956ms	L1	Voltage outage	10.30	0.00	0.00	8.41
4/14/15 3:20:09 PM'230							
4/14/15 3:20:09 PM'250	20.051ms	L1	Voltage outage	10.30	0.00	0.00	0.00
4/14/15 3:20:09 PM'270							
4/14/15 3:20:09 PM'290	20.001ms	L1	Voltage outage	10.30	0.00	0.00	0.00
4/14/15 3:20:09 PM'310							
4/14/15 3:20:09 PM'330	140.034ms	L1	Voltage outage	10.30	0.00	0.00	0.00
4/14/15 3:20:09 PM'470							
4/14/15 3:20:09 PM'500	330.002ms	L1	Voltage outage	10.30	0.00	0.00	8.41
4/14/15 3:20:09 PM'830							
4/14/15 3:20:09 PM'850	239.940ms	L1	Voltage outage	10.30	0.00	0.00	8.41
4/14/15 3:20:10 PM'090							
4/14/15 3:20:10 PM'110	100.004ms	L1	Voltage outage	10.30	0.00	0.00	0.00
4/14/15 3:20:10 PM'210							
4/14/15 3:20:10 PM'230	159.955ms	L1	Voltage outage	10.30	0.00	0.00	8.41
4/14/15 3:20:10 PM'390							
4/14/15 3:20:10 PM'410	39.953ms	L1	Voltage outage	10.30	0.00	0.00	5.95
4/14/15 3:20:10 PM'450							
4/14/15 3:20:10 PM'470	100.004ms	L1	Voltage outage	10.30	0.00	0.00	0.00
4/14/15 3:20:10 PM'570							
4/14/15 3:20:10 PM'590	79.944ms	L1	Voltage outage	10.30	0.00	0.00	0.00
4/14/15 3:20:10 PM'670							

Starttime	Length	Input	Eventtype	Limit	Min	Avg	Max
Endtime							
4/14/15 3:20:10 PM'690	100.004ms	L1	Voltage outage	10.30	0.00	5.95	8.41
4/14/15 3:20:10 PM'790							
4/14/15 3:20:11 PM'861	20.532s	L1	Voltage outage	10.30	0.00	0.00	8.41
4/14/15 3:20:32 PM'393							
4/14/15 3:20:32 PM'413	91.085ms	L1	Voltage outage	10.30	0.00	0.00	0.00
4/14/15 3:20:32 PM'504							
4/14/15 3:22:12 PM'448	1m 26s	L1	Voltage outage	10.30	0.00	0.00	0.00
4/14/15 3:23:39 PM'443							
7/7/15 4:38:18 PM'823	4.902s	L1	Voltage outage	10.30	0.00	0.00	0.00
7/7/15 4:38:23 PM'725							
7/23/15 10:08:17 PM'253	4.933s	L1	Voltage outage	10.30	0.00	0.00	0.00
7/23/15 10:08:22 PM'185							

## Overvoltage

201 Events have been found.

Residual voltage u %	Duration t ms		
	10 - 500ms	> 500ms	> 5s - 60s
> 110 - < 120	0	0	0
120 - %	0	0	0

201 out of ranges!

## 100 deepest events

Starttime	Length	Input	Eventtype	Limit	Min	Avg	Max
Endtime							
1/31/15 1:15:10 AM'700	1.283s	L1	Over voltage	253.00	253.07	19337.74	21682.11
1/31/15 1:15:11 AM'983							
3/14/15 2:33:42 PM'617	491.051ms	L1	Over voltage	253.00	253.07	442.34	512.56
3/14/15 2:33:43 PM'108							
3/14/15 2:33:43 PM'491	112.751ms	L2	Over voltage	253.00	253.14	256.05	257.91
3/14/15 2:33:43 PM'603							
1/31/15 1:02:39 AM'334	219.800ms	L3	Over voltage	253.00	253.21	271.47	284.39
1/31/15 1:02:39 AM'554							
1/31/15 1:15:12 AM'024	499.349ms	L3	Over voltage	253.00	253.21	487.38	591.81
1/31/15 1:15:12 AM'523							
1/31/15 1:04:39 AM'205	194.700ms	L1	Over voltage	253.00	253.42	264.75	270.82
1/31/15 1:04:39 AM'400							
3/28/15 10:31:56 AM'097	130.470ms	L3	Over voltage	253.00	253.42	11904.94	15216.34
3/28/15 10:31:56 AM'228							
1/31/15 1:40:52 AM'916	1.197s	L1	Over voltage	253.00	253.49	19852.81	20863.89
1/31/15 1:40:54 AM'113							
1/31/15 1:15:12 AM'054	468.748ms	L2	Over voltage	253.00	253.63	462.85	555.98
1/31/15 1:15:12 AM'523							
1/31/15 1:11:01 AM'859	534.903ms	L2	Over voltage	253.00	253.70	451.21	548.20
1/31/15 1:11:02 AM'394							
1/31/15 1:11:01 AM'869	524.750ms	L1	Over voltage	253.00	253.97	443.82	537.15
1/31/15 1:11:02 AM'394							
1/31/15 1:15:12 AM'775	344.449ms	L1	Over voltage	253.00	253.97	311.51	341.04
1/31/15 1:15:13 AM'120							
3/14/15 2:33:43 PM'415	256.200ms	L1	Over voltage	253.00	254.11	276.25	288.77
3/14/15 2:33:43 PM'672							
3/14/15 2:33:43 PM'412	225.599ms	L3	Over voltage	253.00	254.18	266.94	275.42
3/14/15 2:33:43 PM'637							
7/23/15 10:20:41 PM'512	39.851ms	L3	Over voltage	253.00	254.53	483.08	622.93
7/23/15 10:20:41 PM'552							
1/31/15 1:03:10 AM'181	372.500ms	L3	Over voltage	253.00	254.81	322.88	355.31
1/31/15 1:03:10 AM'554							
1/31/15 1:04:39 AM'185	184.349ms	L3	Over voltage	253.00	254.81	263.74	268.72
1/31/15 1:04:39 AM'370							
1/31/15 1:15:12 AM'755	364.702ms	L2	Over voltage	253.00	254.95	317.24	351.36
1/31/15 1:15:13 AM'120							
1/31/15 1:02:39 AM'321	289.750ms	L2	Over voltage	253.00	255.09	285.75	302.87
1/31/15 1:02:39 AM'610							
1/31/15 1:04:39 AM'183	215.100ms	L2	Over voltage	253.00	255.09	268.26	275.48
1/31/15 1:04:39 AM'398							
1/31/15 1:02:38 AM'517	498.250ms	L3	Over voltage	253.00	255.09	452.73	535.60
1/31/15 1:02:39 AM'015							
1/31/15 1:11:02 AM'678	303.900ms	L1	Over voltage	253.00	255.16	293.08	314.61
1/31/15 1:11:02 AM'982							
1/31/15 1:11:02 AM'638	344.400ms	L3	Over voltage	253.00	255.36	301.35	325.61
1/31/15 1:11:02 AM'982							
1/31/15 1:40:52 AM'916	1.197s	L2	Over voltage	253.00	255.57	967.85	2277.52
1/31/15 1:40:54 AM'113							

Starttime	Length	Input	Eventtype	Limit	Min	Avg	Max
Endtime							
1/31/15 1:20:15 AM'421	1.888s	L3	Over voltage	253.00	255.64	16160.59	18848.34
1/31/15 1:20:17 AM'310							
1/31/15 1:20:17 AM'531	171.049ms	L3	Over voltage	253.00	255.71	425.14	506.66
1/31/15 1:20:17 AM'702							
7/23/15 10:25:20 PM'289	9.950ms	L3	Over voltage	253.00	255.78	255.78	255.78
7/23/15 10:25:20 PM'299							
1/31/15 1:15:12 AM'034	489.199ms	L1	Over voltage	253.00	255.99	464.45	561.33
1/31/15 1:15:12 AM'523							
1/31/15 1:11:02 AM'678	293.799ms	L2	Over voltage	253.00	256.05	289.32	308.66
1/31/15 1:11:02 AM'972							
7/23/15 10:08:50 PM'900	20.051ms	L1	Over voltage	253.00	256.54	297.10	332.80
7/23/15 10:08:50 PM'920							
7/23/15 10:21:47 PM'318	19.951ms	L2	Over voltage	253.00	256.54	267.47	278.04
7/23/15 10:21:47 PM'338							
7/24/15 9:53:07 AM'931	20m 29s	L1	Over voltage	253.00	256.74	20431.63	20615.12
7/24/15 10:13:37 AM'589							
1/31/15 1:02:39 AM'317	309.749ms	L1	Over voltage	253.00	256.88	289.87	308.94
1/31/15 1:02:39 AM'627							
1/31/15 1:04:38 AM'367	497.750ms	L2	Over voltage	253.00	257.02	446.20	532.79
1/31/15 1:04:38 AM'865							
10/1/15 11:47:42 AM'163	3d 23h	L3	Over voltage	253.00	257.02	21149.77	21705.10
10/5/15 11:16:08 AM'087							
1/31/15 1:15:12 AM'765	314.051ms	L3	Over voltage	253.00	257.29	302.41	326.47
1/31/15 1:15:13 AM'079							
1/31/15 1:20:17 AM'531	161.000ms	L1	Over voltage	253.00	257.71	409.81	482.49
1/31/15 1:20:17 AM'692							
1/31/15 1:04:38 AM'349	507.901ms	L3	Over voltage	253.00	258.46	459.52	547.87
1/31/15 1:04:38 AM'857							
3/28/15 10:23:46 AM'620	29.950ms	L2	Over voltage	253.00	258.67	324.85	391.76
3/28/15 10:23:46 AM'650							
1/31/15 3:01:42 AM'175	19.999ms	L2	Over voltage	253.00	259.35	296.44	329.39
1/31/15 3:01:42 AM'195							
1/31/15 1:03:08 AM'625	1.346s	L3	Over voltage	253.00	259.69	16275.52	19802.84
1/31/15 1:03:09 AM'971							
1/31/15 1:02:38 AM'534	478.250ms	L2	Over voltage	253.00	259.96	430.02	509.10
1/31/15 1:02:39 AM'012							
7/23/15 10:14:32 PM'677	30.100ms	L3	Over voltage	253.00	260.57	342.96	377.75
7/23/15 10:14:32 PM'707							
1/31/15 1:03:10 AM'216	352.649ms	L1	Over voltage	253.00	261.18	314.33	342.90
1/31/15 1:03:10 AM'569							
1/31/15 7:20:01 AM'107	42d 7h	L3	Over voltage	253.00	261.66	12172.86	19415.38
3/14/15 2:33:43 PM'094							
7/23/15 10:14:15 PM'323	29.902ms	L3	Over voltage	253.00	261.72	303.11	324.85
7/23/15 10:14:15 PM'353							
1/31/15 1:03:10 AM'181	412.701ms	L2	Over voltage	253.00	261.99	337.29	375.82
1/31/15 1:03:10 AM'594							
1/31/15 3:52:51 AM'323	20.400ms	L3	Over voltage	253.00	263.27	267.34	271.34
1/31/15 3:52:51 AM'343							
1/10/15 12:57:07 PM'921	1m 33s	L2	Over voltage	253.00	263.41	12195.76	21124.72
1/10/15 12:58:41 PM'308							
1/10/15 12:58:41 PM'305	20.101ms	L1	Over voltage	253.00	263.54	269.25	274.84
1/10/15 12:58:41 PM'325							
7/23/15 10:15:12 PM'525	4m 0s	L2	Over voltage	253.00	263.68	20984.44	21089.15
7/23/15 10:19:12 PM'865							
1/31/15 1:02:38 AM'531	498.100ms	L1	Over voltage	253.00	264.48	431.50	509.62
1/31/15 1:02:39 AM'029							
1/31/15 1:04:38 AM'368	497.850ms	L1	Over voltage	253.00	264.48	447.31	531.49
1/31/15 1:04:38 AM'866							
8/24/15 7:17:46 PM'112	26d 15h	L2	Over voltage	253.00	264.48	20967.22	21934.01
9/20/15 11:03:55 AM'178							
7/25/15 1:19:45 PM'118	17h 35m	L1	Over voltage	253.00	265.35	20824.65	21324.98
7/26/15 6:55:43 AM'332							
1/31/15 3:01:42 AM'155	9.949ms	L2	Over voltage	253.00	265.95	265.95	265.95
1/31/15 3:01:42 AM'165							
1/10/15 12:55:37 PM'776	1.171s	L1	Over voltage	253.00	267.21	9110.30	16735.46
1/10/15 12:55:38 PM'947							
7/24/15 10:13:42 AM'375	10h 43m	L2	Over voltage	253.00	269.12	20889.64	23887.25
7/24/15 8:56:48 PM'890							
1/31/15 1:39:32 AM'944	1.276s	L1	Over voltage	253.00	269.38	19355.03	20813.92
1/31/15 1:39:34 AM'219							

Starttime	Length	Input	Eventtype	Limit	Min	Avg	Max
Endtime							
1/31/15 1:03:08 AM'625	1.346s	L2	Over voltage	253.00	269.51	3143.65	5024.98
1/31/15 1:03:09 AM'971							
3/14/15 2:33:42 PM'641	480.550ms	L2	Over voltage	253.00	269.58	472.68	549.39
3/14/15 2:33:43 PM'121							
1/31/15 3:01:40 AM'900	1.245s	L2	Over voltage	253.00	270.36	959.84	2303.98
1/31/15 3:01:42 AM'145							
7/23/15 10:23:43 PM'738	2.173s	L1	Over voltage	253.00	270.89	6867.00	9553.15
7/23/15 10:23:45 PM'911							
1/10/15 12:57:07 PM'921	1m 33s	L3	Over voltage	253.00	270.95	12334.37	24232.01
1/10/15 12:58:41 PM'272							
1/31/15 1:11:01 AM'890	484.400ms	L3	Over voltage	253.00	270.95	459.52	539.42
1/31/15 1:11:02 AM'374							
1/10/15 12:57:07 PM'925	1m 32s	L1	Over voltage	253.00	272.32	12097.00	15862.70
1/10/15 12:58:40 PM'486							
7/23/15 10:21:00 PM'983	19.902ms	L2	Over voltage	253.00	272.51	279.12	285.63
7/23/15 10:21:01 PM'003							
7/23/15 10:15:12 PM'525	4m 0s	L1	Over voltage	253.00	272.64	7672.86	11024.15
7/23/15 10:19:12 PM'834							
1/10/15 1:00:47 PM'560	1m 41s	L3	Over voltage	253.00	272.97	12337.20	24493.28
1/10/15 1:02:28 PM'933							
1/31/15 1:11:00 AM'565	1.273s	L1	Over voltage	253.00	273.10	19506.09	21696.91
1/31/15 1:11:01 AM'839							
7/23/15 10:23:43 PM'739	2.203s	L3	Over voltage	253.00	273.55	13380.76	14702.90
7/23/15 10:23:45 PM'942							
7/7/15 4:38:23 PM'725	16d 5h	L1	Over voltage	253.00	274.71	20937.48	21852.54
7/23/15 10:08:17 PM'212							
7/23/15 10:14:10 PM'633	29.851ms	L1	Over voltage	253.00	275.74	329.06	380.26
7/23/15 10:14:10 PM'663							
1/31/15 1:20:17 AM'532	170.951ms	L2	Over voltage	253.00	275.99	441.02	523.14
1/31/15 1:20:17 AM'702							
7/23/15 10:13:34 PM'049	29.951ms	L1	Over voltage	253.00	276.51	301.18	326.20
7/23/15 10:13:34 PM'079							
7/23/15 10:08:50 PM'905	10.101ms	L2	Over voltage	253.00	276.51	276.51	276.51
7/23/15 10:08:50 PM'915							
7/23/15 10:08:28 PM'588	19.950ms	L3	Over voltage	253.00	276.51	285.57	294.35
7/23/15 10:08:28 PM'608							
1/31/15 1:03:08 AM'630	1.366s	L1	Over voltage	253.00	279.37	18514.84	21707.04
1/31/15 1:03:09 AM'996							
1/31/15 1:20:16 AM'714	777.027ms	L2	Over voltage	253.00	280.63	1131.96	2664.63
1/31/15 1:20:17 AM'491							
1/10/15 1:03:56 PM'722	20.050ms	L3	Over voltage	253.00	281.26	290.60	299.71
1/10/15 1:03:56 PM'742							
7/23/15 10:19:14 PM'259	19.850ms	L2	Over voltage	253.00	281.58	311.05	337.97
7/23/15 10:19:14 PM'278							
7/23/15 10:19:14 PM'268	19.951ms	L1	Over voltage	253.00	282.39	304.79	325.72
7/23/15 10:19:14 PM'288							
7/24/15 1:59:26 AM'118	7h 53m	L3	Over voltage	253.00	284.76	20949.79	21155.41
7/24/15 9:53:03 AM'166							
12/11/14 11:35:10 AM'007	30d 1h	L2	Over voltage	253.00	285.50	12189.98	22218.52
1/10/15 12:55:38 PM'941							
4/11/15 2:56:12 PM'699	20.051ms	L3	Over voltage	253.00	288.95	301.88	314.33
4/11/15 2:56:12 PM'719							
8/24/15 7:17:46 PM'113	26d 15h	L3	Over voltage	253.00	289.38	20994.93	21917.94
9/20/15 11:03:55 AM'181							
7/26/15 7:52:06 AM'728	21d 12h	L3	Over voltage	253.00	290.78	21118.65	21948.88
8/16/15 8:23:48 PM'179							
7/23/15 10:14:32 PM'677	20.051ms	L1	Over voltage	253.00	290.96	301.41	311.51
7/23/15 10:14:32 PM'697							
1/31/15 1:20:17 AM'320	171.203ms	L3	Over voltage	253.00	292.30	807.46	1005.66
1/31/15 1:20:17 AM'491							
10/5/15 11:16:08 AM'040	30.200ms	L1	Over voltage	253.00	293.02	334.45	371.18
10/5/15 11:16:08 AM'070							
7/23/15 10:24:16 PM'317	29.902ms	L1	Over voltage	253.00	293.75	551.44	675.91
7/23/15 10:24:16 PM'347							
1/10/15 1:02:28 PM'923	18.850ms	L2	Over voltage	253.00	294.05	317.36	339.12
1/10/15 1:02:28 PM'942							
7/24/15 1:59:26 AM'117	7h 53m	L1	Over voltage	253.00	295.25	20833.17	21034.29
7/24/15 9:53:03 AM'159							
7/23/15 10:09:00 PM'041	19.951ms	L3	Over voltage	253.00	296.20	297.16	298.11
7/23/15 10:09:00 PM'061							

Starttime	Length	Input	Eventtype	Limit	Min	Avg	Max
Endtime							
3/28/15 10:32:01 AM'210	119.955ms	L2	Over voltage	253.00	296.80	13829.98	16726.32
3/28/15 10:32:01 AM'330							
7/23/15 10:20:22 PM'648	9.901ms	L2	Over voltage	253.00	297.69	297.69	297.69
7/23/15 10:20:22 PM'658							
3/28/15 10:33:28 AM'498	130.755ms	L2	Over voltage	253.00	297.93	11967.46	16282.42
3/28/15 10:33:28 AM'629							
7/23/15 10:08:50 PM'895	30.151ms	L3	Over voltage	253.00	299.47	481.65	582.05
7/23/15 10:08:50 PM'925							
7/23/15 10:15:12 PM'525	4m 0s	L3	Over voltage	253.00	300.53	13626.66	16365.50
7/23/15 10:19:12 PM'859							
3/28/15 10:31:56 AM'103	120.468ms	L2	Over voltage	253.00	302.47	12919.43	15849.61
3/28/15 10:31:56 AM'223							